

# Did you know

Many **Chinese characters** began as pictures thousands of years ago? In this project, you will discover an **ancient Chinese symbol** and transform it into your own artwork using your imagination.

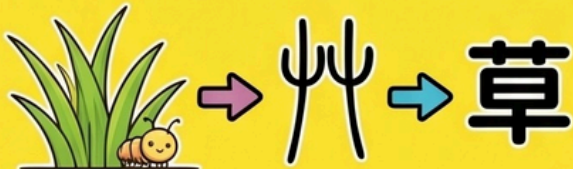
Forest/wood



Mountain



Grass



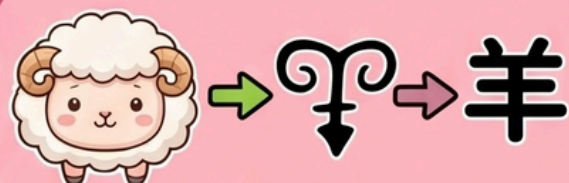
Horse



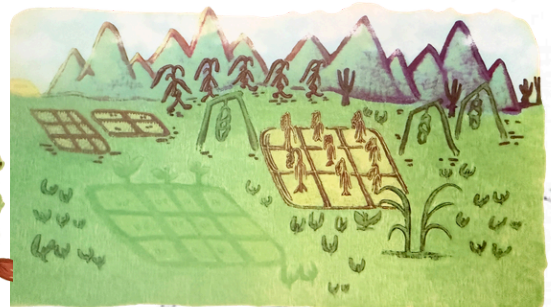
Cow



Goat



Can you imagine these characters in these pictures?



*Notes Through Chinese Brush*

**LONG ACRE ARTS**

Bingham Community Art Exhibition

Jointly Organized by: NBH Studio CIC & The Jan Parnham Trust (Long Acre Arts)

Academic Advisor (Inscriptions & Calligraphy): Dr. Jeffrey Kwong Tsz-wun (Word Heart Studio)



25-26 July 2026

Bingham Community Art Exhibition

**LONG ACRE ARTS**



# *Notts Through Chinese Brush*

Jointly Organized by: NBH Studio CIC | The Jan Parnham Trust (Long Acre Arts) | Word Heart Studio



**Use your creativity with any media, can you hide the Chinese character somewhere inside your artwork?**

**Create your own title:** \_\_\_\_\_

**Created by:** \_\_\_\_\_ **School/ Year:** \_\_\_\_\_

**Description:** \_\_\_\_\_ **Contact email:** \_\_\_\_\_

\*\* Please submit to your teacher or scan and email to us [nbh.studiouk@gmail.com](mailto:nbh.studiouk@gmail.com) on or before 15 July 2026

Selected entries will be displayed at Long Acre Arts from 25-26 July 2026 exhibitions.

Contestants will be contacted by email.

25-26 July 2026

Bingham Community Art Exhibition

LONG ACRE ARTS



# *Notts Through Chinese Brush*

Jointly Organized by: NBH Studio CIC | The Jan Parnham Trust (Long Acre Arts) | Word Heart Studio

## Important Remarks & Submission Guidelines

### **Theme & Creativity:**

Entries can be on any topic of your choice, but must explicitly include/integrate the provided Chinese characters/pictograms into the artwork. Any art media is welcome.

### **Submission Methods:**

Digital Copy: Scan or take a high-quality photo of the artwork and email it to ***nbh.studiouk@gmail.com***.

Hand Copy: Submit the physical artwork directly to your school teacher.

**Submission Deadline:** On or before **15 July 2026**.

**Exhibition Display:** To celebrate every participant's creativity, ALL entries will be proudly displayed at the Bingham Community Art Exhibition held at Long Acre Arts from 25-26 July 2026.

### **Online voting**

Online voting will be organized at organiser's website! Selected artworks will be displayed at the exhibition, we warmly invite all parents, friends, classmates, and the local community to visit the gallery, cast your votes, and show your wonderful support for our young artists!

### **Awards & Prizes:**

*Most Imaginative Award* – For the most unique and out-of-the-box concept.

*Outstanding Creativity Award* – For exceptional artistic expression and media use.

*Chinese Brush Spirit Award* – For outstandingly capturing the essence and spirit of Chinese pictogram art.

*People's Choice Award* – Voted live by exhibition visitors on the day!

*School Participation Award* – Recognising the school with the most enthusiastic involvement.

### **Terms & Conditions:**

1. By submitting, participants grant the organisers permission to display, photograph, and use the artwork images for non-commercial exhibition promotion and community cultural purposes.
2. Please ensure the contact email is written clearly. Winners will be contacted directly via email.
3. The organisers reserve all final rights regarding the competition rules, judging process, prize allocation, and exhibition arrangements.

Jointly Organised by: NBH Studio CIC, The Jan Parnham Trust (Long Acre Arts) & Word Heart Studio.